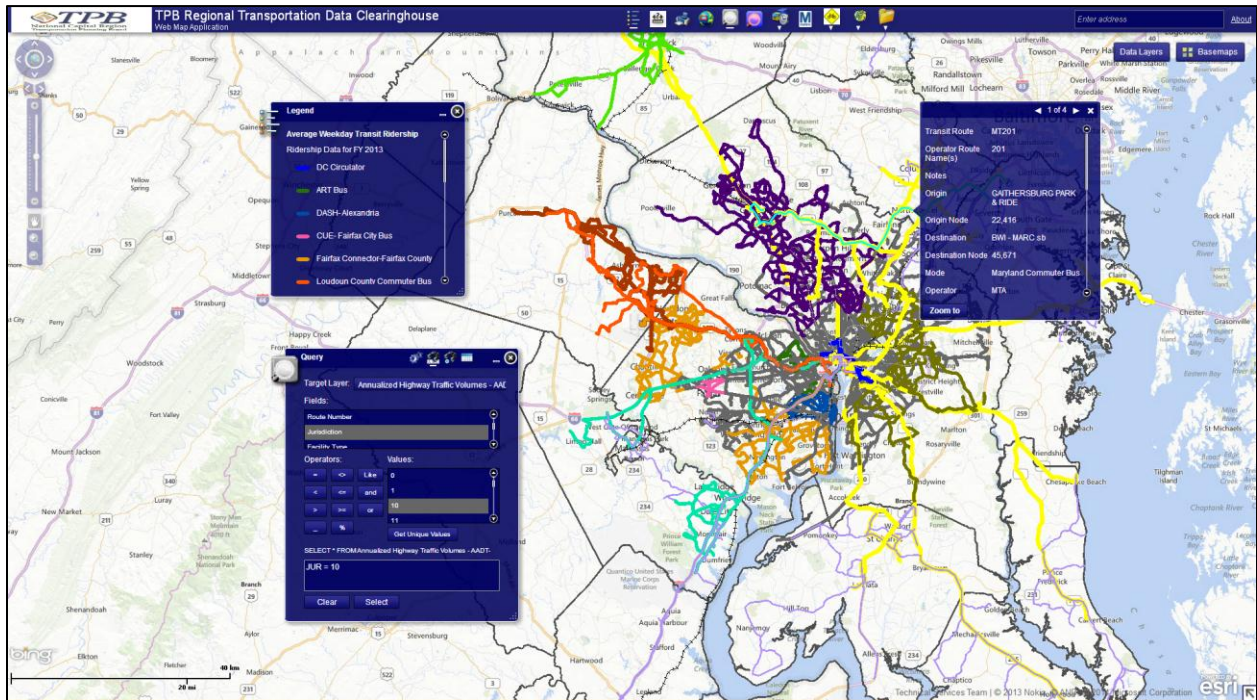


# TPB

## Regional Transportation Data Clearinghouse



### *User's Guide - Appendix*

*Staff of*

*National Capital Region Transportation Planning Board*

*Revised May 2014*

## Appendix

### *Attribute domains and subtypes; field names, values and descriptions*

Several geodatabases used in the RTDC application utilize attribute domains and subtypes to standardize and organize field names and values; this allows databases to contain numeric values for fields while also providing detailed text descriptions where necessary. This section includes text descriptions for standard attributes used in several datasets.

The first table lists each RTDC dataset and whether it contains the fields listed. Additional tables for each field contain the numeric values and text descriptions for these fields. This information may be useful to users when searching data or performing a query by one of these fields. For example, the Query Data tool will list the FType (facility type) code in the query window. Using the table with FType code descriptions will allow users to select the appropriate links by facility type, if applicable.

Layer Name	JUR	FTYPE	CTCode
Hourly Traffic Counts	-	-	-
Annualized Highway Traffic Volumes - AAWDT AADT	X	X	X
External Station Traffic Volumes - AAWDT AADT	-	-	X
Classification counts			
Average Weekday Transit Ridership	-	-	-
Central Employment Core Cordon Count	-	-	-
2011 Regional Air Passenger Survey	-	-	-
Round 8.2 Cooperative Forecast by TAZ	X	-	-
Metrorail Stations	X	-	-
2013 Activity Centers	-	-	-
Version 2.3 Screenlines	-	-	-
Regional Core	-	-	-
Capital Bikeshare Stations	-	-	-
Metropolitan Washington Boundaries	-	-	-

Table A1: Overview of domain/subtypes by dataset

JUR – Jurisdiction code field. Values used in the TPB master network

JUR Code	Jurisdiction	JUR Code	Jurisdiction
0	District of Columbia	14	Carroll County
1	Montgomery County	15	Calvert County
2	Prince George's County	16	St. Mary's County
3	Arlington County	17	King George County
4	Alexandria	18	Fredericksburg
5	Fairfax County	19	Stafford County
6	Loudoun County	20	Spotsylvania County
7	Prince William County	21	Fauquier County
9	Frederick County	22	Clarke County
10	Howard County	23	Jefferson County
11	Anne Arundel County		
12	Charles County		

Table A2: JUR code

FType- Facility type field. Value used in the TPB master network.

FType	Description
1	Freeway
2	Arterial
3	Major Collector
4	Minor Collector
5	Expressway
6	Ramp

Table A3: FType

CT (Count Type) codes are used to provide descriptive details about the type of count that occurred in a given year on a given link. The CT codes are the same for each year's attribute field—each year has a separate CT Code associated with it (CT2006 through CT2012). Fields are contained in the Annualized Traffic Volume layers (Annualized Highway Traffic Volumes - AAWDT AADT and External Station Traffic Volumes - AAWDT AADT).

CTCode	Description	CTCode	Description
0	Volume from a program count done in the current year	10	Volume from a program count done in the current year
1	Volume growth-factored from the previous year	17	Volume growth-factored from a previous year
2	Volume growth-factored from count taken two years ago	19	Volume from a continuous count site
3	Volume growth-factored from count taken three or more years ago	20	Average of more than one volume based on current year counts
7	Volume growth-factored from a previous year	21	Average of more than one volume based on counts done in a previous year
8	Volume based on a current-year count	29	Average of volumes from more than one continuous count site
9	Volume from a continuous count site	31	Average of more than one volume based on counts done in a previous year
CTCode	Description	CTCode	Description
20	Average of more than one volume based on current year counts	39	Average of volumes from more than one continuous count site
27	Average of volumes growth-factored from a previous year	50	Volume from a program count done in the current year
52	Volumes from two different facilities added together	53	Volume taken from the current year West Virginia traffic map
54	Volume taken from the West Virginia traffic map from an adjacent year	57	Volume growth-factored from a previous year
59	Volume from a continuous count site		

Table A4: CTCode

## Key for MetroRail Survey Data

The following table includes the field names, and detail descriptions of the field names of the 2012 Metrorail Survey.

Field Name	Field Description
Station	Metro Station
Shift	Time period data collected
Origination Trips	Number of respondent who entered system at this station
Origination Trips (%)	Number of respondent who entered system at this station
Destination Trips	Percent of system wide respondents who entered system at this station
Destination Trips (%)	Percent of system wide respondents who left Metrorail system at this station
Home (% Purpose)	For trips originating at this station, percent of respondents reporting purpose of trip as 'Home'
Work/Business (% Purpose)	For trips originating at this station, percent of respondents reporting purpose of trip as 'Work' or 'Job-Related business'
Personal Trip (% Purpose)	For trips originating at this station, percent of respondents reporting purpose of trip as 'Personal Trip'
School (% Purpose)	For trips originating at this station, percent of respondents reporting purpose of trip as 'School'
Shopping or Meal (% Purpose)	For trips originating at this station, percent of respondents reporting purpose of trip as 'Shopping or meal'
Sightseeing/Recreation (% Purpose)	For trips originating at this station, percent of respondents reporting purpose of trip as 'Sightseeing or recreation'
Public Transport (% of Mode of Access)	For trips originating at this station, percent of respondents reporting mode of transportation to station as 'Metrobus', 'Ride On', 'Fairfax Connector', Prince George's TheBUS', 'DASH', 'DC Circulator', 'ART', 'CUE', 'Other bus service', or 'AMTRAK, MARC, or VRE'
Private Car (% of Mode of Access)	For trips originating at this station, percent of respondents reporting mode of transportation to station as 'Drove a car and parked', 'Rode with someone who parked', or Dropped off by someone'

Field Name	Field Description
Nonmotorized (% of Mode of Access)	For trips originating at this station, percent of respondents reporting mode of transportation to station as 'Bicycle', 'Walked', or 'Wheelchair'
Other (% of Mode of Access)	For trips originating at this station, percent of respondents reporting annual household income as 'Less than \$10,000'
HI10000to19999(%)	For trips originating at this station, percent of respondents reporting annual household income as '\$10,000 to \$19,999'
HI20000to29999(%)	For trips originating at this station, percent of respondents reporting annual household income as '\$20,000 to \$29,999'
HI30000to49999(%)	For trips originating at this station, percent of respondents reporting annual household income as '\$30,000 to \$49,999'
HI50000to74999(%)	For trips originating at this station, percent of respondents reporting annual household income as '\$50,000 to \$74,999'
HI75000to99999(%)	For trips originating at this station, percent of respondents reporting annual household income as '\$75,000 to \$99,000'
HI100000to149999(%)	For trips originating at this station, percent of respondents reporting annual household income as '\$100,000 to \$149,999'
HI150000to199999(%)	For trips originating at this station, percent of respondents reporting annual household income as '\$150,000 to \$199,999'
HI200000ormore(%)	For trips originating at this station, percent of respondents reporting annual household income as '\$200,000 or more'
AmerIndianorAlaskaNative(%)	For trips originating at this station, percent of respondents reporting race as 'American Indian or Alaska Native'
AsianorPacificIslander(%)	For trips originating at this station, percent of respondents reporting race as 'Asian or Pacific Islander'
BlackorAfricanAmerican(%)	For trips originating at this station, percent of respondents reporting race as 'Black of African American'
White(%)	For trips originating at this station, percent of respondents reporting race as 'White'
Mixed Race(%)	For trips originating at this station, percent of respondents reporting race as 'Mixed Race'
Other Race(%)	For trips originating at this station, percent of respondents reporting race as 'Other Race'
Minority(%)	For trips originating at this station, percent of respondents reporting either Hispanic or Latin origin as 'Yes' or race as 'American Indian or Alaska Native', 'Black of African American', 'Mixed Race', or 'Other Race'
Orig Station 1	Most common reported origination station for trips that end at this station
Orig Station 2	Second most common reported origination station for trips that end at this station
Orig Station 3	Third most common reported origination station for trips that end at this station
Destin Station 1	Most common reported destination station for trips that start at this station
Destin Station 2	Second most common reported destination station for trips that start at this station
Destin Station 3	Third most common reported destination station for trips that start at this station
Juris of Resid 1	Most common jurisdiction of residence for respondents that end trip at this station
Juris of Resid 2	Second Most common jurisdiction of residence for respondents that end trip at this station
Juris of Resid 3	Third most common jurisdiction of residence for respondents that end trip at this station

Table 1: Metro Rail Survey Key